

DUAL LAYERED

OMNI-DIRECTIONAL APPLICATION

As a dual-layered, dehydrated amniotic membrane, CYGNUS® Dual supports an optimal environment for healing wounds while offering streamlined product application and practice logistics.¹⁻⁴

As the newest member of the Organogenesis Advanced Wound Care Portfolio, CYGNUS Dual is backed by our team of professionals who are with you and your practice every step of the way.



THE DUAL-LAYERED DIFFERENCE

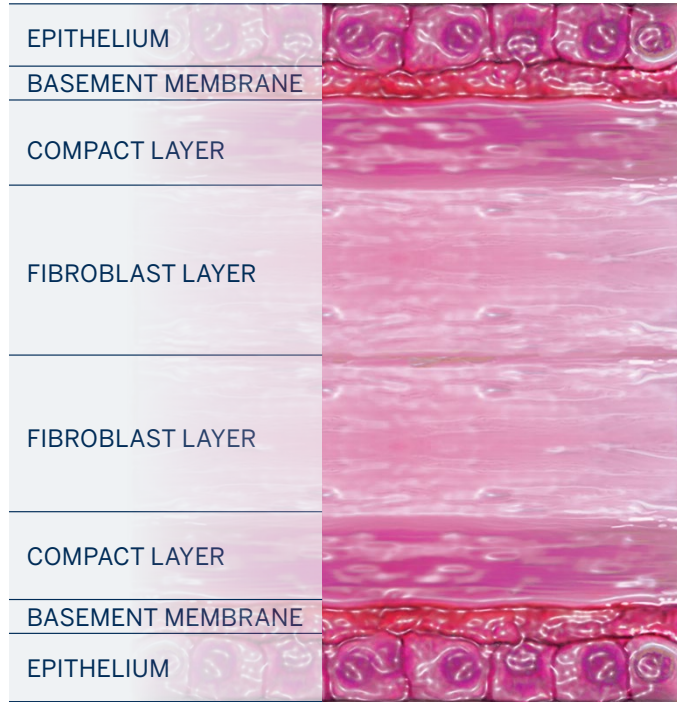


Image of CYGNUS Dual dehydrated amnion/amnion

Two layers of human amnion allograft increases thickness

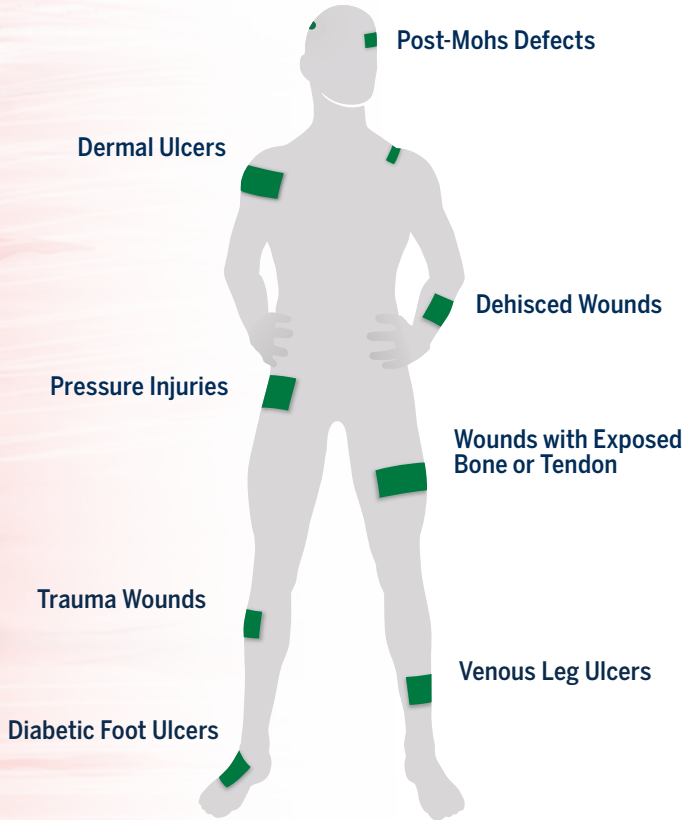
- ~200 µm (0.2 mm) thick⁵
- 2x thicker than single-layered amniotic allografts⁵

Epithelial layers face outward allowing for omni-directional application

- Either side of product may be applied to the wound bed¹
- Helps streamline your procedures

EASE OF USE FOR A WIDE RANGE OF WOUNDS

CYGNUS® Dual may be used to support healing in a wide range of partial- and full-thickness acute and chronic wounds¹



CYGNUS DUAL STREAMLINES YOUR PRACTICE LOGISTICS

- Ready-to-use, **ambient temperature storage** (2°C to 30°C)
- No prep required**, hydrates in situ
- E-Beam sterilized** for sterility assurance level (SAL) of 10⁻⁶
- 5-year shelf life**

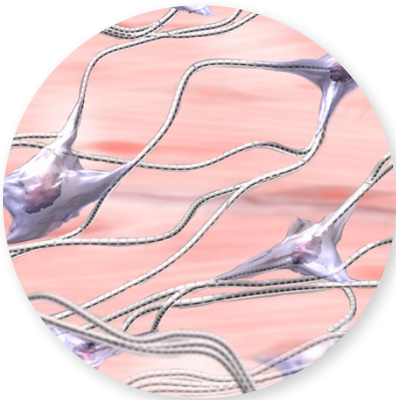
CYGNUS DUAL AMNIOTIC ALLOGRAFT		
ITEM NUMBER	SIZE	SQ. CM.
585-001	2×3cm	6
585-002	4×4cm	16
585-003	4×6cm	24

Product HCPCS Code: Q4282, CYGNUS Dual per sq cm

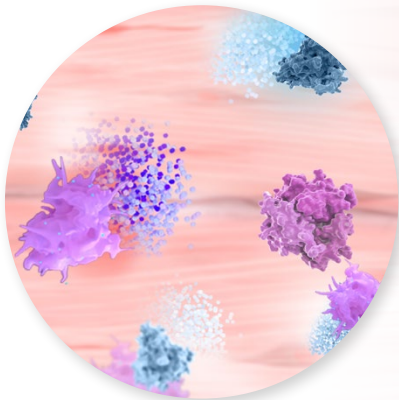
AMNIOTIC TISSUES SUPPORT HEALING

CYGNUS® Dual is composed of an **extracellular matrix (ECM) scaffold** and provides a **protective barrier** to support the body's ability to repair underlying damaged tissue, such as acute and chronic wounds¹⁻⁴

ECM Proteins



Growth Factors & Cytokines



TESTING HAS CONFIRMED THAT CYGNUS DUAL RETAINS NATIVE COMPONENTS OF AMNIOTIC TISSUE^{3,4}

NEWEST MEMBER OF A TRUSTED PORTFOLIO

The Organogenesis broad portfolio of regenerative and tissue-based solutions is capable of supporting your patients from early in the wound healing process through to closure^{1,6-11}

Antimicrobial ECM scaffolds	Bioengineered with living cells	Fresh placental allografts	Dehydrated placental allografts
PuraPly®AM PuraPly®XT	Apligraf®	Affinity® Novachor®	CYGNUS® Dual NuShield®

ECM=extracellular matrix

THE DUAL-LAYERED DIFFERENCE TO SUPPORT HEALING



- Two layers of human amniotic tissue increases thickness^{1,5}
- Epithelial layers oriented outward allowing omni-directional application¹
- Protective barrier, ECM scaffold, and growth factors/cytokines to support your patient's inherent ability to heal¹⁻⁴
- Ease of use for a wide range of wounds, helping streamline practice logistics¹

THE ORGANOGENESIS DIFFERENCE TO SUPPORT YOUR PRACTICE



A comprehensive program that provides your practice with the highest level of customer service and reimbursement support including:

- Benefit verifications
- Coding details
- Ordering and shipping support



Please visit the
CYGNUS Dual
web page

**Give your patients and
your practice the dual-layered
difference with CYGNUS® Dual**

1. CYGNUS Dual Allograft Tissue Information and Instructions for Use. Vivex Biologics, Inc. 2. Brantley JN, Verla TD. *Adv Wound Care*. 2015;4(9):545-559. 3. Data on file. Delcroix Gaetan JR, et al. Preserving the Natural Regenerative Potential of Amniotic Membrane. Vivex Biologics, Inc. 4. Niknejad H, et al. *Eur Cells Mater*. 2008;15:88-99. 5. Data on file at Vivex Biologics, Inc. Ref 1. 6. PuraPly Antimicrobial [package insert]. Canton, MA: Organogenesis Inc; 2023. 7. PuraPly XT [package insert]. Canton, MA: Organogenesis Inc; 2023. 8. Apligraf [package insert]. Canton, MA: Organogenesis Inc; 2017. 9. Affinity Allograft Tissue Information and Instructions for Use. Canton, MA: Organogenesis Inc; 2023. 10. Novachor Allograft Tissue Information and Instructions for Use. Canton, MA: Organogenesis Inc; 2023. 11. NuShield Allograft Tissue Information and Instructions for Use. Canton, MA: Organogenesis Inc; 2023.